



Process Vacuum Solutions

Test kit vacuum pump

VAC²⁴ SEVEN



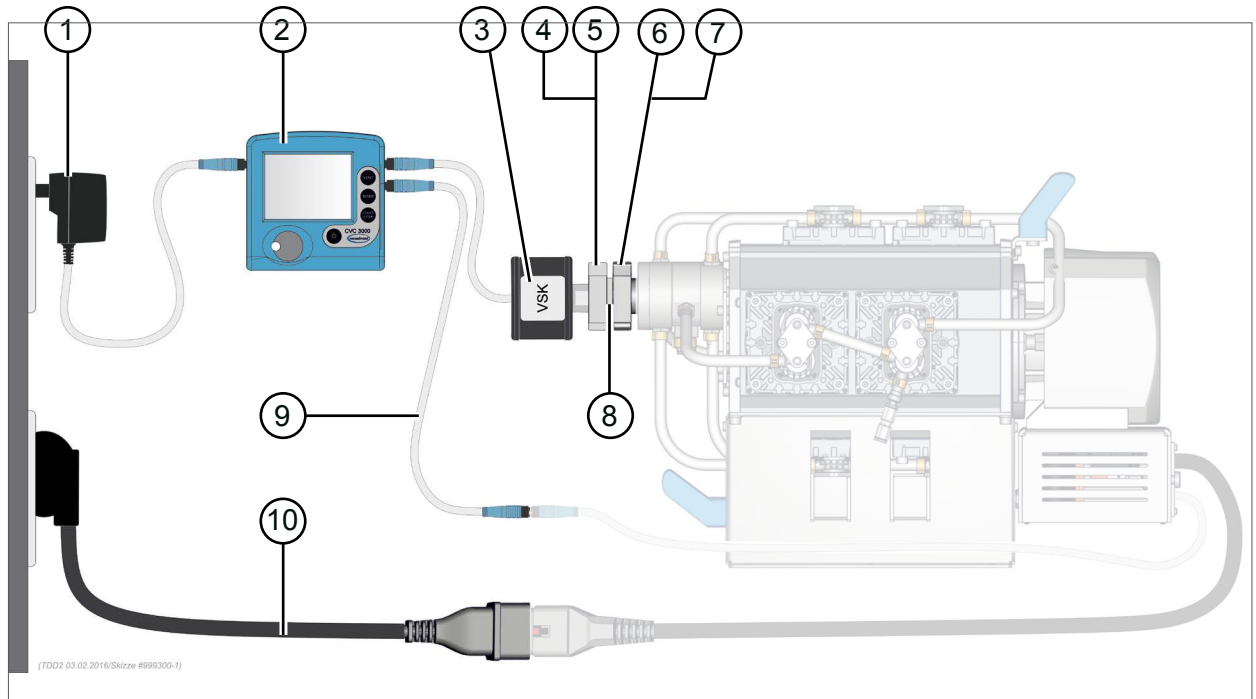
Instructions for use



Product description

The Test kit is for the functional test of a vacuum pump of a vacuum pumping unit **VAC 24seven** after a routine maintenance - *Maintenance kit #20696881*.

Assembly sketch



IMPORTANT! Parts on customer side are drawn partially transparent.

Included materials

Test kit for vacuum pump VAC 24seven #20649915		Order-N°
1	Wall power supply plug 25 W	20612089
2	Vacuum Controller CVC 3000 (default mode <i>Pump down</i>)	20636559
3	Vacuum sensor VSK 3000	20636657
4	Clamping ring DN 10/16	20660005
5	Centering ring DN10/16	20660190
6	Clamping ring DN 20/25	20660006
7	Centering ring DN20/25	20660191
8	Reducing piece DN25/16	20669041
9	VACUU·BUS® adapter cable (male/male)	20635277
10	Mains cable CEE	20612058
10	Mains cable CH	20676021
10	Mains cable ZH	20635997
10	Mains cable IND	20635365
10	Mains cable (US)	20612065

- Instructions for use CVC 3000	20999151
- Instructions for use VSK 3000	20999159
- Instructions for use Test kit vacuum pump	20901509
- Safety instructions	20999254

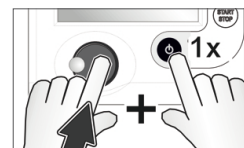
Connect the Test kit

⇒ Assemble the Test kit gas-tight like pictured in the *Assembly sketch*.

IMPORTANT! ⇒ Only use the VACUU·BUS® adapter cable (9) for the functional test of a vacuum pump of a **VAC 24seven**.

Functional test with Vacuum controller¹ CVC 3000

1. Press and hold *Selection knob* while you press the *On/Off* key shortly.
2. Select in the displayed menu the required language and then pressure unit. (How to select: turn selection knob and then push it)
3. Press START/STOP key.
 - Vacuum pump starts to pump down.
 - CVC 3000 is running in mode *Pump down*.
4. Let the vacuum pump run for about 15 minutes.
5. After 15 minutes read the vacuum value on the display of the CVC 3000.
6. Compare the displayed pressure reading with the specific ultimate vacuum² of your vacuum pump.
 - The functional test is successful when the pressure reading on the display corresponds to the ultimate vacuum of the vacuum pump.



IMPORTANT! If the vacuum pump does not achieve its specific vacuum, then the cause could be pollution inside the vacuum pump or hose or incorrect performed maintenance.



- ⇒ Check and if necessary clean vacuum connections and hoses.
- ⇒ Perform maintenance again and check valves, membrane and sealings for its correct position.
- ⇒ Use the table *Fault-Cause-Remedy* in the manual of the Pump module² to locate the source of a present error.
- ⇒ Use the vacuum pump only when it is in proper working condition.

¹ -> Read *Instructions for use #CVC3000* for complete operating information.

² -> Please refer to the technical data for the *indicated ultimate vacuum* of a vacuum pump. See *Instructions for use #VAC24/7 Pump module*.



Process Vacuum Solutions

Manufacturer:

VACUUBRAND GMBH + CO KG
Alfred-Zippe-Str. 4
97877 Wertheim
GERMANY

Phone:

- Head office: +49 9342 808-0
- Sales: +49 9342 808-5550
- Service: +49 9342 808-5660

Fax: +49 9342 808-5555

E-Mail: info@vacuubrand.com

Web: www.vacuubrand-process.com